

MATTHEW JAMES

Residential Sales • Lettings • Management



Ward Road, Tufnell Park, N19 5EG

£2,800 Per Month

We offer to let this stunning luxury penthouse apartment set on the fourth floor of this private building positioned enviously near to Tufnell Park Underground Station and close to the hustle and bustle of local boutique shops, exciting restaurants, bars and cafes, the apartment is also within a short stroll, jog or cycle to the famous open spaces of Parliament Hill Fields. With luxury, high quality finish throughout, the lounge space features floor to ceiling windows allowing natural light to flood in to the well planned living space and beyond.

The bespoke kitchen is finished to an exceptional standard and offers a top quality worktop and fully fitted appliances whilst the shower room is finished in high quality porcelain tiling.

This beautifully crafted apartment must be seen to be appreciated so please contact us today to book your personal viewing with a member of our lettings team.

ENTRANCE HALL

LOUNGE



OPEN PLAN KITCHEN



MASTER BEDROOM



OFFICE / OCCASIONAL BEDROOM



SHOWER ROOM



TERRACE



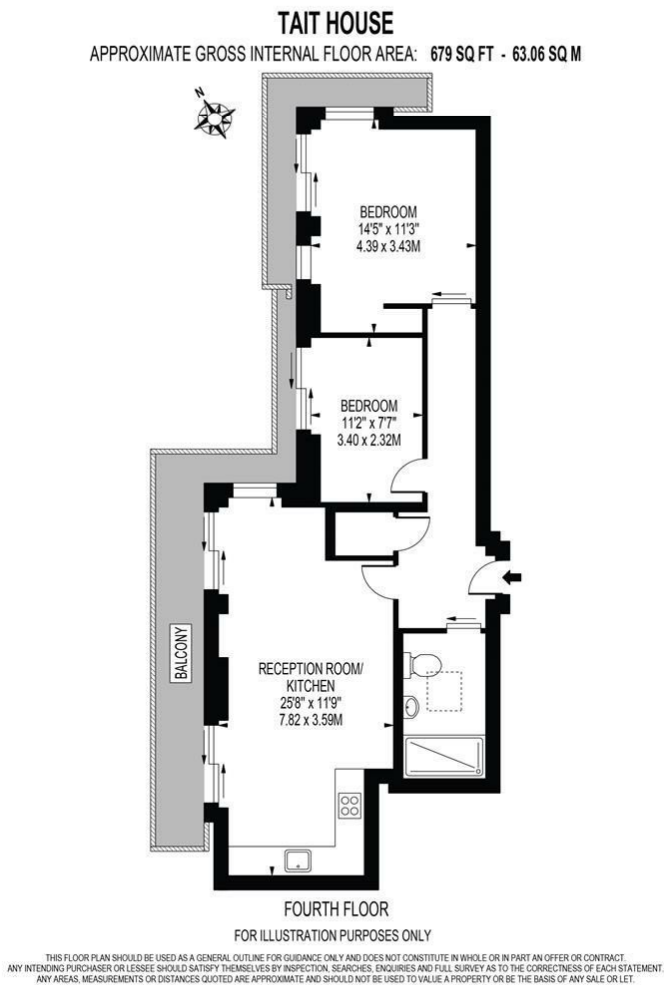
ADDITIONAL INFORMATION

Holding Deposit Required £690

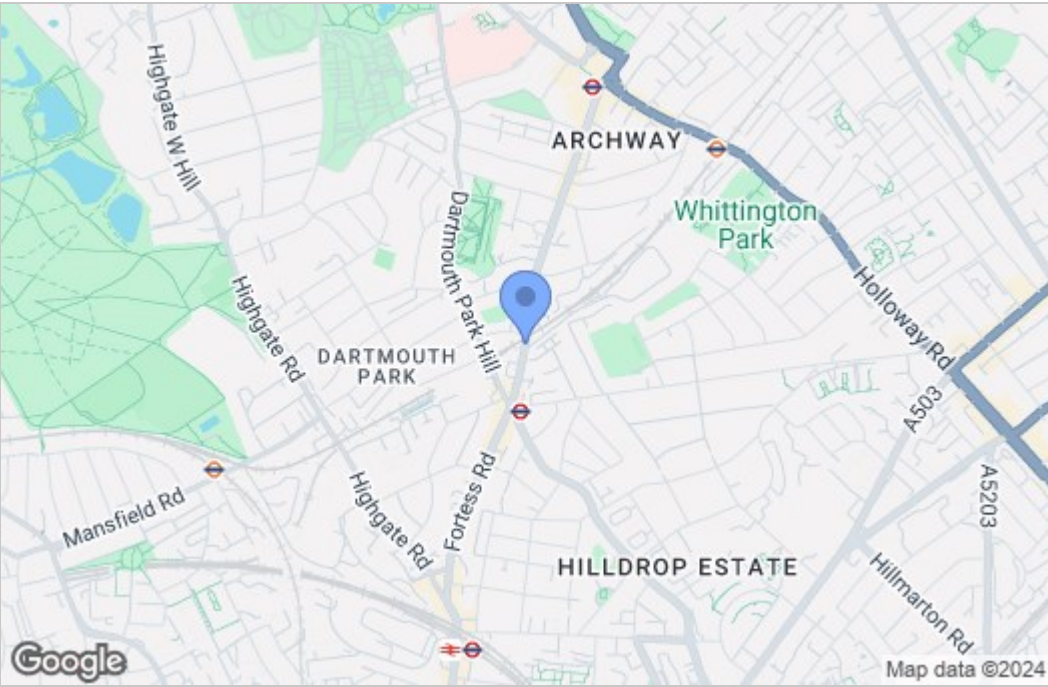
Full Deposit Required is £3230

Islington Council Tax Band D

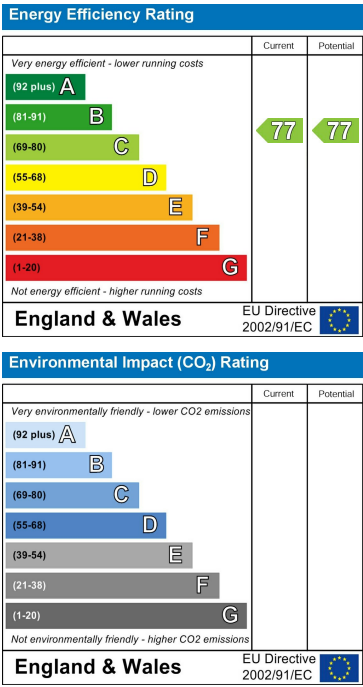
Floor Plan



Area Map



Energy Efficiency Graph



These particulars, whilst believed to be accurate are set out as a general outline only for guidance and do not constitute any part of an offer or contract. Intending purchasers should not rely on them as statements of representation of fact, but must satisfy themselves by inspection or otherwise as to their accuracy. No person in this firms employment has the authority to make or give any representation or warranty in respect of the property.